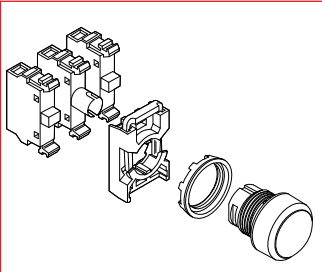


Press-to-test pilot light pushbuttons

Pilot Devices
Modular Range
22mm



MP1-MLFPT1C

Flush button standard.
For extended button, replace '1' in MP1-... with '3'

Press-to-test

Type	Black plastic ring	Chrome metal ring	
	Catalog number	Catalog number	List price
Operator only ①	MP1-KLPTΔ	MP1-MLPTΔ	\$ 22.50
Full voltage type			
6V	MP1-KLFPT6Δ	MP1-MLFPT6Δ	46.00
12V	MP1-KLFPT7Δ	MP1-MLFPT7Δ	
24V	MP1-KLFPT8Δ	MP1-MLFPT8Δ	
48V	MP1-KLFPT9Δ	MP1-MLFPT9Δ	
120V	MP1-KLFPT1Δ	MP1-MLFPT1Δ	
Resistor type			
120V	MP1-KLRPT1Δ	MP1-MLRPT1Δ	54.00
240V	MP1-KLRPT2Δ	MP1-MLRPT2Δ	
Transformer type			
120V/6V	MP1-KLTPT1Δ	MP1-MLTPT1Δ	80.00
240V/6V	MP1-KLTPT2Δ	MP1-MLTPT2Δ	
380V/6V	MP1-KLTPT3Δ	MP1-MLTPT3Δ	
480V/6V	MP1-KLTPT4Δ	MP1-MLTPT4Δ	
600V/6V	MP1-KLTPT5Δ	MP1-MLTPT5Δ	
120V/24V	MP1-KLTPT6Δ	MP1-MLTPT6Δ	80.00
240V/24V	MP1-KLTPT7Δ	MP1-MLTPT7Δ	
380V/24V	MP1-KLTPT8Δ	MP1-MLTPT8Δ	
480V/24V	MP1-KLTPT9Δ	MP1-MLTPT9Δ	

Δ Select the lens color from the "Illuminated lenses" selection chart and substitute the suffix code for the Δ. The lens and bulb are included in the price.

Press-to-test (LED bulb)

Type	Black plastic ring	Chrome metal ring	
	Catalog number	Catalog number	List price
Full voltage type			
24V	MP1-KLFPTL8Δ	MP1-MLFPTL8Δ	\$ 55.00
120V	MP1-KLFPTL1Δ	MP1-MLFPTL1Δ	
230V		MP1-MLFPTL2Δ	61.00
Transformer type			
120V/24V	MP1-KLTPTL1Δ	MP1-MLTPTL1Δ	80.00
240V/24V	MP1-KLTPTL2Δ	MP1-MLTPTL2Δ	
380V/24V	MP1-KLTPTL3Δ	MP1-MLTPTL3Δ	
480V/24V	MP1-KLTPTL4Δ	MP1-MLTPTL4Δ	

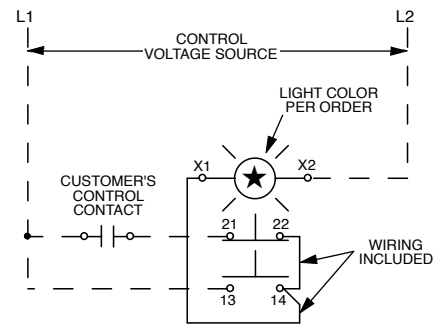
Δ Select the lens color from the "Illuminated lenses" selection chart and substitute the suffix code for the Δ. The lens and bulb are included in the price.

Δ Illuminated lenses

Button color	Suffix code
Red	R
Green	G
Yellow	Y
Blue	L
Clear	C
White	W

NOTE: White LEDs use clear lenses.

Schematic



① 1 N.O. & 1 N.C. contact supplied; lamp module and bulb must be ordered separately.