

Selection guide IP65, UL Type 4 30mm Plastic casing

30mm width — LS35P

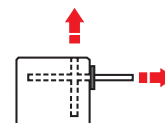
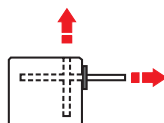


LS35P80...-S

LS35P81...-S

Translation with small latch
(key) and adjustable head

Translation with small latch
(key) and pivoting head



9 CENELEC conformity

Actuating device and actuation type

Positive contact opening

30mm width — LS35P

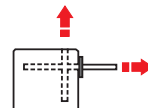
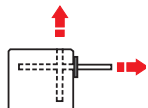


LS35P80...-S

LS35P81...-S

Galvanized steel rotative axis

Stainless steel rotative axis



CENELEC conformity

Actuating device and actuation type

Positive contact opening

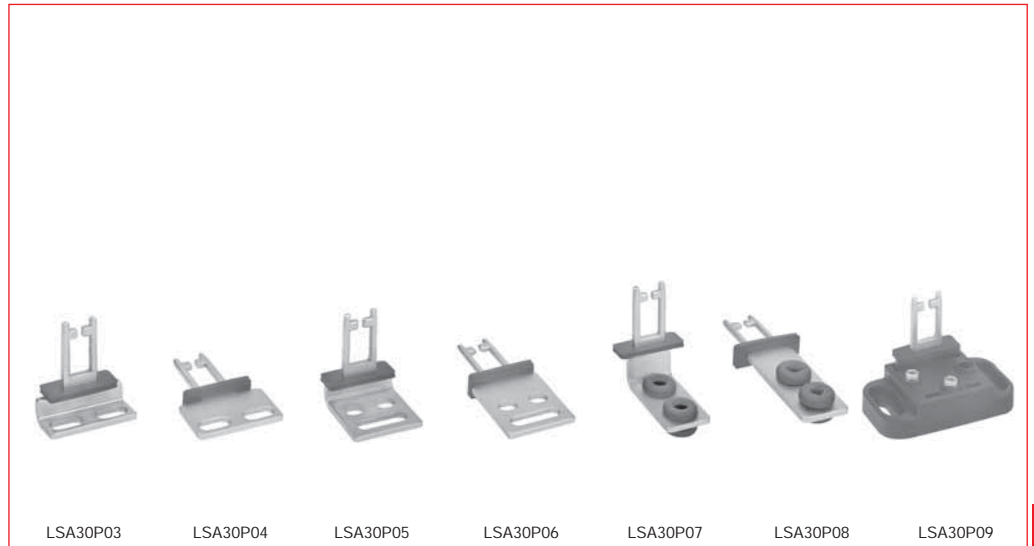
Selection guide

IP65, UL Type 4

30mm Plastic casing



30mm width — LS35P

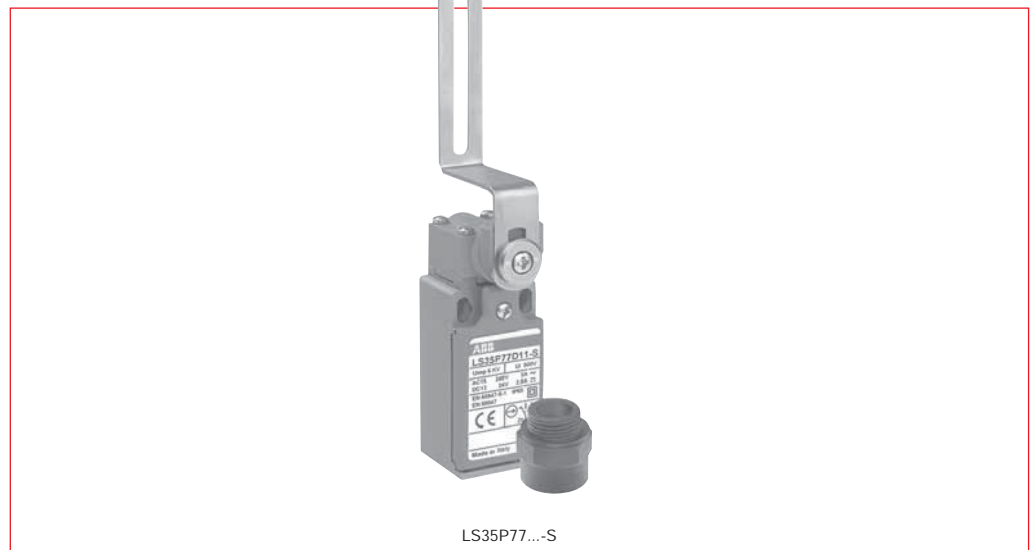


CENELEC conformity

LSA30P03	LSA30P04	LSA30P05	LSA30P06	LSA30P07	LSA30P08	LSA30P09
Right angle key	Straight key	Right angle key	Straight key	Right angle key shock absorber	Straight key shock absorber	Adjustable angle key
22mm	22mm	13mm	13mm	15mm	15mm	40mm

9

30mm width — LS35P

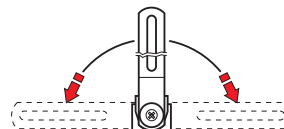


CENELEC conformity

Actuating device and actuation type

LS35P77...-S

Galvanized steel flush mounting right angle lever



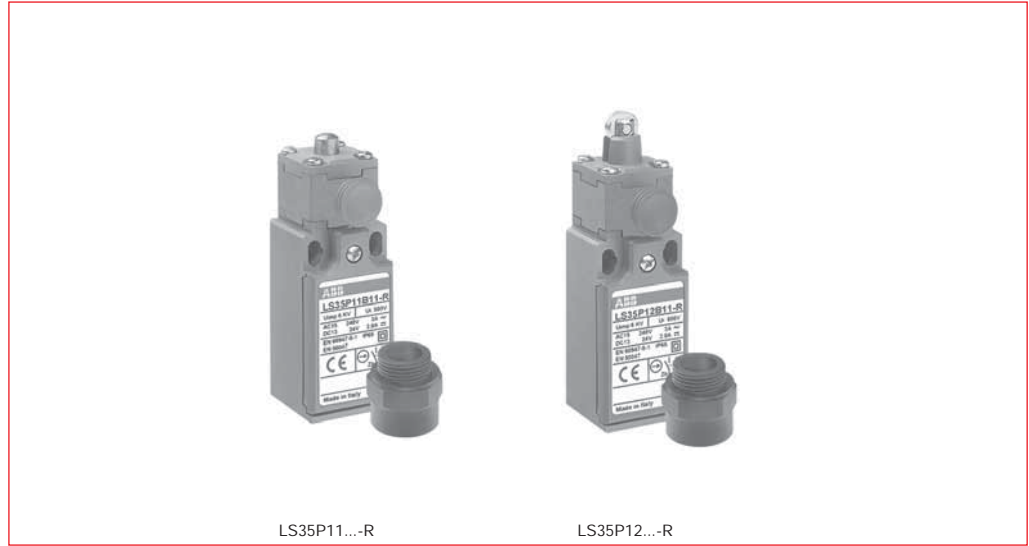
Positive contact opening



Selection guide

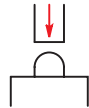
IP65, UL Type 4, latch & manual reset
30mm Plastic casing

30mm width — LS35P



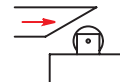
LS35P11...-R

Galvanized steel
plain plunger



LS35P12...-R

Galvanized steel
roller plunger



9

CENELEC conformity

Actuating device and actuation type

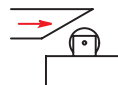
Positive contact opening

30mm width — LS35P



LS35P13...-R

Galvanized steel
plain plunger



CENELEC conformity

Actuating device and actuation type

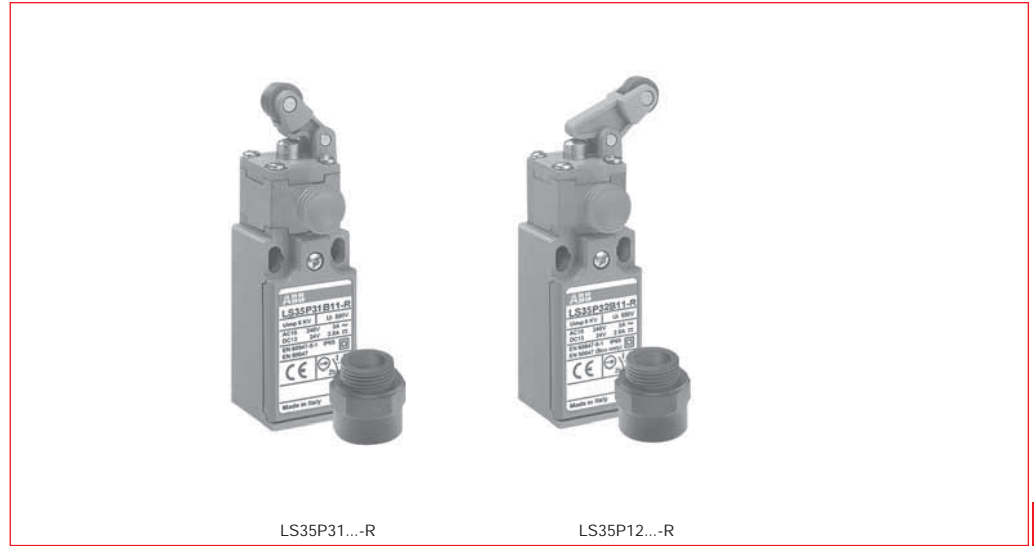
Positive contact opening

Selection guide

IP65, UL Type 4, latch & manual reset

30mm Plastic casing

30mm width — LS35P



LS35P31...-R

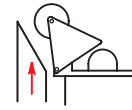
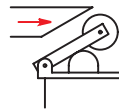
LS35P12...-R

CENELEC conformity

Actuating device and actuation type

Plastic roller on galvanized steel plunger

Plastic roller lever on galvanized steel plunger



Positive contact opening



30mm width — LS35P

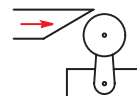


LS35P13...-R

Galvanized steel plain plunger

CENELEC conformity

Actuating device and actuation type



Positive contact opening

