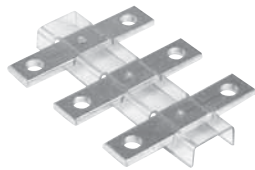
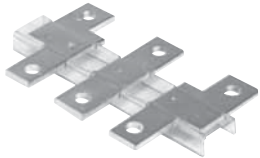


# Accessories

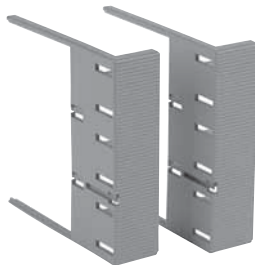
Softstarters  
Type PST



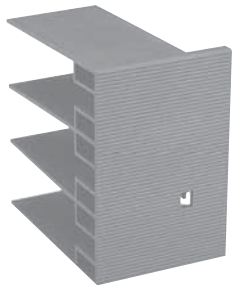
LX400



LW185



LT185-AC



LT460-AC



PSTEK

## Terminal extension pieces (set of 3) ③

Softstarter Type	Dimensions		Weight lbs.	Catalog number	List price
	Hole (mm)	Bar (mm)			
PST85 – 142	8.5	17.5 x 5	0.55	LX185	\$ 90
PST175 – 300	10.5	20 x 5	0.77	LX300	140
PST370 – 470	10.5	25 x 5	1.1	LX460	195
PST570 – 1050	13	40 x 6	1.9	LX750	225

Delivered with straps to prevent them from rotating.

## Terminal enlargement pieces (set of 3) ③

Softstarter Type	Dimensions		Weight lbs.	Catalog number	List price
	Hole (mm)	Bar (mm)			
PST30 – 72	6.5	15 x 3	0.22	LW110	\$ 15
PST85 – 142	10.5	17.5 x 5	0.55	LW185	120
PST175 – 300	10.5	20 x 5	0.99	LW300	130
PST370 – 470	10.5	25 x 5	1.6	LW460	295
PST570 – 1050	13	40 x 6	2.7	LW750	355

Delivered with straps to prevent them from rotating.

## Terminal shrouds ③

Softstarter Type	Required quantity	Weight lbs.	Catalog number	List price
PST85 – 142	(1) - LT185-AC & (1) LT460-AC	0.11	LT185-AC	\$ 10
		0.22		
PST85 – 142	(1) - LT185-AL & (1) LT460-AL	0.48	LT185-AL	10
		1.8		
PST175 – 300	LT300-AC ⑤	0.15	LT300-AC	10
		0.62		
PSTB370 – 470	LT460-AC	0.22	LT460-AC	20
		1.8		
PSTB570 – 1050	LT750-AC	0.26	LT750-AC	20
		1.8		

## Control transformers

PST Amp ratings	Standard VA	Price adder for extra VA			
		100VA	250VA	500VA	750VA
9 – 68	50	\$ 175	—	—	—
69 – 130	75	225	\$ 300	—	—
131 – 480	250	360	400	\$ 500	\$ 625
481 – 1050	750	—	725	—	975

## Terminal lug kits ④

Wire range	For softstarter ②	Catalog number	List price
#6 - 250 MCM (1 per phase)	PST85 – PST142	PSLK-185 ④⑥	\$ 150
#4 - 400 MCM (1 per phase)	PST175 – PST300	PSLK-300 ④⑥	195
#4 - 500 MCM (2 per phase)	PST175 – PST300	PSLK-300/2 ④⑥	280
2/0 - 500 MCM (2 per phase)	PSTB370 – PSTB470	PSLK-580/2	350
2/0 - 500 MCM (3 per phase)	PSTB570 – PSTB1050	PSLK-750/3	525

## Remote key pad (HMI) – 10 ft. cable included

Softstarter type	Dimensions H x W x D (inches)	Weight (lbs.)	Catalog number	List price
All PST(B)	5.43 x 5.3 x 0.9	1	PSTEK	\$ 385

- ① Includes line/load lugs and hardware.
- ② Softstarters listed are provided with terminating bus tabs as standard.
- ③ Use Discount Schedule ABA.
- ④ Must order two sets if using bypass contactor.
- ⑤ Requires two sets.
- ⑥ Discount schedule PSS