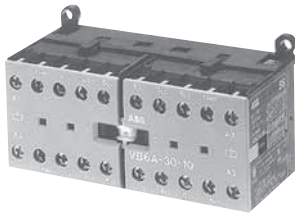


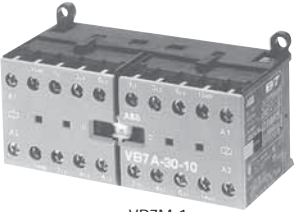
Contactors

B6 & B7, mechanically interlocked

3 Phase



VB6M-1



VB7M-1

Mechanically interlocked with screw connections

General purpose AC1	Maximum motor FLA AC3	3 Phase motor horsepower				Single phase		Number of power poles	Auxiliary contacts	Catalog number	List price
		208V	230V	460V	600V	120V	230V				
AC operated											
12	6.8	1	2	3	1	1/2	1	3	1 N.O. 1 N.C.	VB6M-★ VB6M-★01	\$ 104
16	9.6	2	3	5	5	1	2	3	1 N.O. 1 N.C.	VB7M-★ VB7M-★01	143
DC operated											
12	6.8	1	2	3	1	1/2	1	3	1 N.O. 1 N.C.	VBC6M-★ VBC6M-★01	105
16	9.6	2	3	5	5	1	2	3	1 N.O. 1 N.C.	VBC7M-★ VBC7M-★01	156

4

Mechanically interlocked with flat pin connections

General purpose AC1	Maximum motor FLA AC3	3 Phase motor horsepower				Single phase		Number of power poles	Auxiliary contacts	Catalog number	List price
		208V	230V	460V	600V	120V	230V				
AC operated											
12	6.8	1	2	3	1	1/2	1	3	1 N.O. 1 N.C.	VB6MFP-★ VB6MFP-★01	\$ 104
16	9.6	2	3	5	5	1	2	3	1 N.O. 1 N.C.	VB7MFP-★ VB7MFP-★01	143
DC operated											
12	6.8	1	2	3	1	1/2	1	3	1 N.O. 1 N.C.	VBC6MFP-★ VBC6MFP-★01	105
16	9.6	2	3	5	5	1	2	3	1 N.O. 1 N.C.	VBC7MFP-★ VBC7MFP-★01	156

Mechanically interlocked with soldering pin connections

General purpose AC1	Maximum motor FLA AC3	3 Phase motor horsepower				Single phase		Number of power poles	Auxiliary contacts	Catalog number	List price
		208V	230V	460V	600V	120V	230V				
AC operated											
12	6.8	1	2	3	1	1/2	1	3	1 N.O. 1 N.C.	VB6MSP-★ VB6MSP-★01	\$ 104
16	9.6	2	3	5	5	1	2	3	1 N.O. 1 N.C.	VB7MSP-★ VB7MSP-★01	143
DC operated											
12	6.8	1	2	3	1	1/2	1	3	1 N.O. 1 N.C.	VBC6MSP-★ VBC6MSP-★01	105
16	9.6	2	3	5	5	1	2	3	1 N.O. 1 N.C.	VBC7MSP-★ VBC7MSP-★01	156

Coil voltage selection

★ Coil voltage suffix. Refer to Coil Voltage Selection Chart and substitute the desired coil voltage suffix for the ★.

Coil voltage selection chart

	Volts								
	12	24	42	48	110/125	110/120	220	220/240	380/415
AC 40-450 Hz		F	L	G		1		2	M
DC	U	Y	V	W	P		R		