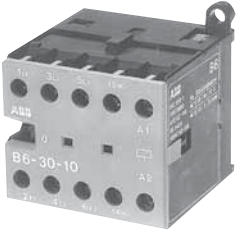


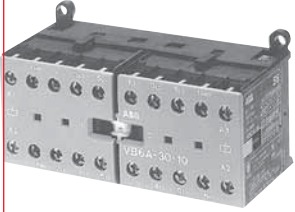


Applications with other ABB products

Miniature contactors



B6C-1



VB6M-1

For more information on miniature controls, see Section 4

Miniature contactors — Non-reversing with screw connections

General purpose AC1	Maximum motor FLA AC3	3 Phase motor horsepower				Single phase		Number of power poles	Auxiliary contacts	Catalog number	List price
		208V	230V	460V	600V	120V	230V				
AC operated											
12	6.8	1	2	3	1	1/2	1	3 3 4	1 N.O. 1 N.C. —	B6C-★ B6C-★01 B6C4P-★	\$ 51
16	9.6	2	3	5	5	1	2	3 3 4	1 N.O. 1 N.C. —	B7C-★ B7C-★01 B7C4P-★	72
DC operated											
12	6.8	1	2	3	1	1/2	1	3 3 3	1 N.O. 1 N.C.	BC6C-★ BC6C-★01	57
16	9.6	2	3	5	5	1	2	3 3 3	1 N.O. 1 N.C.	BC7C-★ BC7C-★01	78

NOTE: Use Discount schedule AA

Miniature mechanically interlocked contactors with screw connections

General purpose AC1	Maximum motor FLA AC3	3 Phase motor horsepower				Single phase		Number of power poles	Auxiliary contacts	Catalog number	List price
		208V	230V	460V	600V	120V	230V				
AC operated											
12	6.8	1	2	3	1	1/2	1	3	1 N.O. 1 N.C.	VB6M-★ VB6M-★01	\$ 104
16	9.6	2	3	5	5	1	2	3	1 N.O. 1 N.C.	VB7M-★ VB7M-★01	143
DC operated											
12	6.8	1	2	3	1	1/2	1	3	1 N.O. 1 N.C.	VBC6M-★ VBC6M-★01	105
16	9.6	2	3	5	5	1	2	3	1 N.O. 1 N.C.	VBC7M-★ VBC7M-★01	156

NOTE: Use Discount schedule AA

Coil voltage selection

★ Coil voltage suffix. Refer to Coil Voltage Selection Chart and substitute the desired coil voltage suffix for the ★.

Coil voltage selection chart

	Volts								
	12	24	42	48	110/125	110/120	220	220/240	380/415
AC 40-450 Hz		F	L	G		1		2	M
DC	U	Y	V	W	P		R		