

Fixed capacitor banks

3 phase, Internally Protected Elements

240 & 480 Volt, 60 Hz

Low Voltage
Network Quality



F26G250

Suitable for direct compensation where fixed power factor correction is desired.

Features include:

- Dry environmentally safe construction
- Self healing capability
- Patented Internal Protected Elements
- Individual capacitors connected by bus bar
- Indoor, dusttight or raintight enclosure
- NEMA 1, 3R, 12
- Easy mounting
- Easy electrical connection to large terminals
- Convenient grounding lug

240 Volt, 60 Hz — 3 phase

| Enclosure size | kvar rating ① | Qty / kvar | Approx. shipping weight (lbs.) | Enclosure type | | | | | |
|----------------|---------------|------------|--------------------------------|-----------------|------------|-------------------|------------|------------------|------------|
| | | | | Indoor – NEMA 1 | | Outdoor – NEMA 3R | | Indoor – NEMA 12 | |
| | | | | Catalog number | List price | Catalog number | List price | Catalog number | List price |
| 63 | 70 | 2/35 | 155 | F246G70 | \$ 1375 | F246R70 | \$ 1815 | F246D70 | \$ 1424 |
| | 80 | 1/35, 1/40 | 155 | F246G80 | 1552 | F246R80 | 1600 | F246D80 | 1600 |
| | 90 | 2/45 | 155 | F246G90 | 1766 | F246R90 | 1815 | F246D90 | 1815 |
| | 100 | 2/50 | 155 | F246G100 | 1873 | F246R100 | 1922 | F246D100 | 1922 |
| | 110 | 2/55 | 155 | F246G110 | 2087 | F246R110 | 2136 | F246D110 | 2136 |
| | 120 | 2/60 | 155 | F246G120 | 2247 | F246R120 | 2296 | F246D120 | 2296 |
| | 130 | 1/40, 2/45 | 235 | F246G130 | 2461 | F246R130 | 2510 | F246D130 | 2510 |
| | 150 | 3/50 | 235 | F246G150 | 2622 | F246R150 | 2671 | F246D150 | 2671 |
| | 160 | 1/50, 3/55 | 155 | F246G160 | 2996 | F246R160 | 3045 | F246D160 | 3045 |
| | 180 | 3/60 | 235 | F246G180 | 3210 | F246R180 | 3259 | F246D180 | 3259 |
| | 200 | 4/50 | 310 | F246G200 | 3745 | F246R200 | 3794 | F246D200 | 3794 |
| | 250 | 5/50 | 370 | F246G250 | 4815 | F246R250 | 4864 | F246D250 | 4864 |
| | 300 | 5/60 | 370 | F246G300 | 5457 | F246R300 | 5506 | F246D300 | 5506 |

480 Volt, 60 Hz — 3 phase

| Enclosure size | kvar rating ① | Qty / kvar | Approx. shipping weight (lbs.) | Enclosure type | | | | | |
|----------------|---------------|------------|--------------------------------|-----------------|------------|-------------------|------------|------------------|------------|
| | | | | Indoor – NEMA 1 | | Outdoor – NEMA 3R | | Indoor – NEMA 12 | |
| | | | | Catalog number | List price | Catalog number | List price | Catalog number | List price |
| 63 | 125 | 1/55, 1/70 | 125 | F486G125 | \$ 1300 | F486R125 | \$ 1349 | F486D125 | \$ 1349 |
| | 130 | 2/65 | 125 | F486G130 | 1375 | F486R130 | 1424 | F486D130 | 1424 |
| | 140 | 2/70 | 125 | F486G140 | 1428 | F486R140 | 1476 | F486D140 | 1476 |
| | 150 | 2/75 | 125 | F486G150 | 1450 | F486R150 | 1499 | F486D150 | 1499 |
| 83 | 160 | 2/80 | 155 | F488G160 | 1519 | F488R160 | 1567 | F488D160 | 1567 |
| | 175 | 2/87.5 | 155 | F488G175 | 1621 | F488R175 | 1669 | F488D175 | 1669 |
| | 180 | 2/90 | 155 | F488G180 | 1733 | F488R180 | 1781 | F488D180 | 1781 |
| | 200 | 2/100 | 155 | F488G200 | 1840 | F488R200 | 1888 | F488D200 | 1888 |
| 63 | 220 | 1/70, 2/75 | 200 | F486G220 | 1980 | F486R220 | 2029 | F486D220 | 2029 |
| | 225 | 3/75 | 200 | F486G225 | 2081 | F486R225 | 2129 | F486D225 | 2129 |
| 83 | 240 | 3/80 | 235 | F488G240 | 2161 | F488R240 | 2209 | F488D240 | 2209 |
| | 250 | 1/90, 2/80 | 235 | F488G250 | 2327 | F488R250 | 2375 | F488D250 | 2375 |
| | 260 | 2/90, 1/80 | 235 | F488G260 | 2461 | F488R260 | 2510 | F488D260 | 2510 |
| | 280 | 1/00, 2/90 | 235 | F488G280 | 2568 | F488R280 | 2617 | F488D280 | 2617 |
| | 300 | 3/100 | 235 | F488G300 | 2675 | F488R300 | 2724 | F488D300 | 2724 |
| | 350 | 4/87.5 | 310 | F488G350 | 2996 | F488R350 | 3045 | F488D350 | 3045 |
| | 360 | 4/90 | 310 | F488G360 | 3210 | F488R360 | 3259 | F488D360 | 3259 |
| | 400 | 4/100 | 310 | F488G400 | 3638 | F488R400 | 3687 | F488D400 | 3687 |
| | 450 | 5/90 | 370 | F488G450 | 4334 | F488R450 | 4383 | F488D450 | 4383 |
| | 475 | 5/95 | 370 | F488G475 | 4601 | F488R475 | 4650 | F488D475 | 4650 |
| | 500 | 5/100 | 370 | F488G500 | 4815 | F488R500 | 4864 | F488D500 | 4864 |
| | 600 | 6/100 | 450 | F488G600 | 5457 | F488R600 | 5506 | F488D600 | 5506 |

208 Volt availability

For 208 volt applications, derate the 240V capacitors. The kvar at 208V will be .75 times the kvar at 240V.

NOTE: ABB's patented IPE design eliminates the need for additional overcurrent protection when capacitors are electrically connected on the load side of a motor starter circuit breaker or fusible disconnect switch.

① For additional kvar ratings not listed above, please consult factory.

Fixed capacitor banks

3 Phase, Internally Protected Elements

600Volt, 60Hz

600 volt, 60Hz — 3 phase

| Enclosure size | kvar rating ① | Qty / kvar | Approx. shipping weight (lbs.) | Enclosure type | | | | | |
|----------------|---------------|------------|--------------------------------|-----------------|------------|-------------------|------------|------------------|------------|
| | | | | Indoor – NEMA 1 | | Outdoor – NEMA 3R | | Indoor – NEMA 12 | |
| | | | | Catalog number | List price | Catalog number | List price | Catalog number | List price |
| 63 | 160 | 2/80 | 155 | F606G160 | \$ 1605 | F606R160 | \$ 1653 | F606D160 | \$ 1653 |
| 83 | 200 | 2/100 | 155 | F608G200 | 1926 | F608R200 | 1974 | F608D200 | 1974 |
| 63 | 240 | 3/80 | 195 | F606G240 | 2354 | F606R240 | 2402 | F606D240 | 2402 |
| 83 | 270 | 3/90 | 230 | F608G270 | 2675 | F608R270 | 2723 | F608D270 | 2723 |
| | 300 | 3/100 | 230 | F608G300 | 2889 | F608R300 | 2937 | F608D300 | 2937 |
| 63 | 320 | 4/80 | 250 | F606G320 | 3050 | F606R320 | 3098 | F606D320 | 3098 |
| 83 | 350 | 4/87.5 | 275 | F608G350 | 3210 | F608R350 | 3258 | F608D350 | 3258 |
| | 360 | 4/90 | 275 | F608G360 | 3371 | F608R360 | 3419 | F608D360 | 3419 |
| | 400 | 4/100 | 275 | F608G400 | 3959 | F608R400 | 4007 | F608D400 | 4007 |
| | 500 | 5/100 | 375 | F608G500 | 5564 | F608R500 | 5612 | F608D500 | 5612 |
| | 600 | 6/100 | 450 | F608G600 | 6420 | F608R600 | 6468 | F608D600 | 6468 |

Capacitor state indication system

| 240V kvar | 480V & 600V kvar | Catalog number suffix | List price adder |
|-----------|------------------|-----------------------|------------------|
| 90 – 120 | 125 – 200 | -2LE | \$ 225 |
| 130 – 180 | 210 – 300 | | 338 |
| 200 | 320 – 400 | | 449 |
| 250 – 300 | 450 – 500 | | 562 |
| — | 600 | | 674 |

The capacitor state indication system consists of two yellow LED lights which illuminate only when the capacitor is energized and functioning at 65% or more of its rated kvar capacity.

The two light system will indicate a failure in any one of the three phases of the capacitor.

Wall mounting assemblies

| Type | Catalog number | List price adder |
|---|----------------|------------------|
| Wall mounting kit, 2 – 6 units per bank | FBWM | \$ 500 |

NOTE: ABB's patented IPE design eliminates the need for additional overcurrent protection when capacitors are electrically connected on the load side of a motor starter circuit breaker or fusible disconnect switch.

Fixed capacitor banks

3 Phase, 240 & 480 Volt, 60 Hz

with three fuses and blown fuse indicators



F26G250-3FI

ABB low voltage capacitors are fully protected by the three levels of protection offered by the patented Sequential Protection System which includes dry self-healing capacitors, internally protected elements and the dry non-flammable vermiculite filler. However, some users have traditionally requested external fuses and blown fuse indicators, so these modified units are offered for those applications.

Features include:

- Dry, environmentally safe construction
- Self healing capability
- Patented Internal Protected Elements
- Individual capacitors connected by bus bar
- NEMA 1, 3R, 12
- Easy mounting
- Easy electrical connection to large terminals
- Convenient grounding lug
- Each individual capacitor includes three fuses and three blown fuse indication lamps

240 Volt, 60 Hz — 3 phase

| Enclosure size | kvar rating ^① | Qty / kvar | Approx. shipping weight (lbs.) | Enclosure type | | | | | |
|----------------|--------------------------|------------|--------------------------------|-----------------|------------|-------------------|------------|------------------|------------|
| | | | | Indoor – NEMA 1 | | Outdoor – NEMA 3R | | Indoor – NEMA 12 | |
| | | | | Catalog number | List price | Catalog number | List price | Catalog number | List price |
| 63 | 70 | 2/35 | 135 | F246G70-3FI | \$ 1625 | F246R70-3FI | \$ 1673 | F246D70-3FI | \$ 1673 |
| | 80 | 2/40 | 135 | F246G80-3FI | 1846 | F246R80-3FI | 1894 | F246D80-3FI | 1894 |
| | 90 | 2/45 | 135 | F246G90-3FI | 2087 | F246R90-3FI | 2135 | F246D90-3FI | 2135 |
| | 100 | 2/50 | 135 | F246G100-3FI | 2408 | F246R100-3FI | 2456 | F246D100-3FI | 2456 |
| | 110 | 2/55 | 135 | F246G110-3FI | 2568 | F246R110-3FI | 2616 | F246D110-3FI | 2616 |
| | 120 | 2/60 | 135 | F246G120-3FI | 2729 | F246R120-3FI | 2777 | F246D120-3FI | 2777 |
| | 130 | 1/40, 2/45 | 235 | F246G130-3FI | 2943 | F246R130-3FI | 2991 | F246D130-3FI | 2991 |
| | 150 | 3/50 | 235 | F246G150-3FI | 3210 | F246R150-3FI | 3258 | F246D150-3FI | 3258 |
| | 160 | 1/50, 3/55 | 155 | F246G160-3FI | 3424 | F246R160-3FI | 3472 | F246D160-3FI | 3472 |
| | 180 | 3/60 | 235 | F246G180-3FI | 3745 | F246R180-3FI | 3793 | F246D180-3FI | 3793 |
| | 200 | 4/50 | 310 | F246G200-3FI | 4173 | F246R200-3FI | 4221 | F246D200-3FI | 4221 |
| | 250 | 5/50 | 370 | F246G250-3FI | 5243 | F246R250-3FI | 5291 | F246D250-3FI | 5291 |
| | 300 | 5/60 | 370 | F246G300-3FI | 5778 | F246R300-3FI | 5826 | F246D300-3FI | 5826 |

480 Volt, 60 Hz — 3 phase

| Enclosure size | kvar rating ^① | Qty / kvar | Approx. shipping weight (lbs.) | Enclosure type | | | | | |
|----------------|--------------------------|-------------|--------------------------------|-----------------|------------|-------------------|------------|------------------|------------|
| | | | | Indoor – NEMA 1 | | Outdoor – NEMA 3R | | Indoor – NEMA 12 | |
| | | | | Catalog number | List price | Catalog number | List price | Catalog number | List price |
| 63 | 125 | 1/55, 1/70 | 135 | F486G125-3FI | \$ 1525 | F486R125-3FI | \$ 1573 | F486D125-3FI | \$ 1573 |
| | 130 | 2/65 | 135 | F486G130-3FI | 1578 | F486R130-3FI | 1626 | F486D130-3FI | 1626 |
| | 140 | 2/70 | 135 | F486G140-3FI | 1605 | F486R140-3FI | 1653 | F486D140-3FI | 1653 |
| | 150 | 2/75 | 135 | F486G150-3FI | 1685 | F486R150-3FI | 1733 | F486D150-3FI | 1733 |
| 83 | 160 | 2/80 | 155 | F488G160-3FI | 1766 | F488R160-3FI | 1814 | F488D160-3FI | 1814 |
| | 175 | 2/87.5 | 155 | F488G175-3FI | 1873 | F488R175-3FI | 1921 | F488D175-3FI | 1921 |
| | 180 | 2/90 | 155 | F488G180-3FI | 1926 | F488R180-3FI | 1974 | F488D180-3FI | 1974 |
| | 200 | 2/100 | 155 | F488G200-3FI | 2033 | F488R200-3FI | 2081 | F488D200-3FI | 2081 |
| 63 | 220 | 1/70, 2/75 | 200 | F486G220-3FI | 2274 | F486R220-3FI | 2322 | F486D220-3FI | 2322 |
| | 225 | 3/75 | 200 | F486G225-3FI | 2434 | F486R225-3FI | 2482 | F486D225-3FI | 2482 |
| 83 | 240 | 3/80 | 235 | F488G240-3FI | 2515 | F488R240-3FI | 2563 | F488D240-3FI | 2563 |
| | 250 | 1/90, 2/80 | 235 | F488G250-3FI | 2675 | F488R250-3FI | 2723 | F488D250-3FI | 2723 |
| | 260 | 2/90, 1/80 | 235 | F488G260-3FI | 2782 | F488R260-3FI | 2830 | F488D260-3FI | 2830 |
| | 280 | 1/100, 2/90 | 235 | F488G280-3FI | 2889 | F488R280-3FI | 2937 | F488D280-3FI | 2937 |
| | 300 | 3/100 | 235 | F488G300-3FI | 2996 | F488R300-3FI | 3044 | F488D300-3FI | 3044 |
| | 350 | 4/87.5 | 310 | F488G350-3FI | 3531 | F488R350-3FI | 3579 | F488D350-3FI | 3579 |
| | 360 | 4/90 | 310 | F488G360-3FI | 3692 | F488R360-3FI | 3740 | F488D360-3FI | 3740 |
| | 400 | 4/100 | 310 | F488G400-3FI | 4173 | F488R400-3FI | 4221 | F488D400-3FI | 4221 |
| | 450 | 5/90 | 370 | F488G450-3FI | 4869 | F488R450-3FI | 4917 | F488D450-3FI | 4917 |
| | 475 | 5/95 | 370 | F488G475-3FI | 5243 | F488R475-3FI | 5291 | F488D475-3FI | 5291 |
| | 500 | 5/100 | 370 | F488G500-3FI | 5564 | F488R500-3FI | 5612 | F488D500-3FI | 5612 |
| | 600 | 6/100 | 450 | F488G600-3FI | 6099 | F488R600-3FI | 6147 | F488D600-3FI | 6147 |

208 Volt availability

For 208 volt applications, derate the 240V capacitors. The kvar at 208V will be .75 times the kvar at 240V.

NOTE: ABB's patented IPE design eliminates the need for additional overcurrent protection when capacitors are electrically connected on the load side of a motor starter circuit breaker or fusible disconnect switch.

① For additional kvar ratings not listed above, please consult factory.

Fixed capacitor banks

3 phase, 600 Volt, 60 Hz

with three fuses and blown fuse indicators

600 volt, 60Hz — 3 phase

| Enclosure size | kvar rating ^① | Qty / kvar | Approx. shipping weight (lbs.) | Enclosure type | | | | | |
|----------------|--------------------------|------------|--------------------------------|-----------------|------------|-------------------|------------|------------------|------------|
| | | | | Indoor – NEMA 1 | | Outdoor – NEMA 3R | | Indoor – NEMA 12 | |
| | | | | Catalog number | List price | Catalog number | List price | Catalog number | List price |
| 63 | 160 | 2/80 | 155 | F606G160-3FI | \$ 1819 | F606R160-3FI | \$ 1867 | F606D160-3FI | \$ 1867 |
| 83 | 200 | 2/100 | 155 | F608G200-3FI | 2140 | F608R200-3FI | 2188 | F608D200-3FI | 2188 |
| 63 | 240 | 3/80 | 195 | F606G240-3FI | 2675 | F606R240-3FI | 2723 | F606D240-3FI | 2723 |
| 83 | 270 | 3/90 | 230 | F608G270-3FI | 2943 | F608R270-3FI | 2991 | F608D270-3FI | 2991 |
| | 300 | 3/100 | 230 | F608G300-3FI | 3210 | F608R300-3FI | 3258 | F608D300-3FI | 3258 |
| 63 | 320 | 4/80 | 250 | F606G320-3FI | 3424 | F606R320-3FI | 3472 | F606D320-3FI | 3472 |
| 83 | 350 | 4/87.5 | 275 | F608G350-3FI | 3745 | F608R350-3FI | 3793 | F608D350-3FI | 3793 |
| | 360 | 4/90 | 275 | F608G360-3FI | 4013 | F608R360-3FI | 4061 | F608D360-3FI | 4061 |
| | 400 | 4/100 | 275 | F608G400-3FI | 4280 | F608R400-3FI | 4328 | F608D400-3FI | 4328 |
| | 500 | 5/100 | 375 | F608G500-3FI | 6420 | F608R500-3FI | 6468 | F608D500-3FI | 6468 |
| | 600 | 6/100 | 450 | F608G600-3FI | 7490 | F608R600-3FI | 7538 | F608D600-3FI | 7538 |

Capacitor state indication system

| 240V kvar | 480V & 600V kvar | Catalog number suffix | List price adder |
|-----------|------------------|-----------------------|------------------|
| 90 – 120 | 125 – 200 | -2LE | \$ 225 |
| 130 – 180 | 210 – 300 | | 337 |
| 200 | 320 – 400 | | 449 |
| 250 – 300 | 450 – 500 | | 562 |
| — | 600 | | 674 |

The capacitor state indication system consists of two yellow LED lights which illuminate only when the capacitor is energized and functioning at 65% or more of its rated kvar capacity.

The two light system will indicate a failure in any one of the three phases of the capacitor.

Wall mounting assemblies ^②

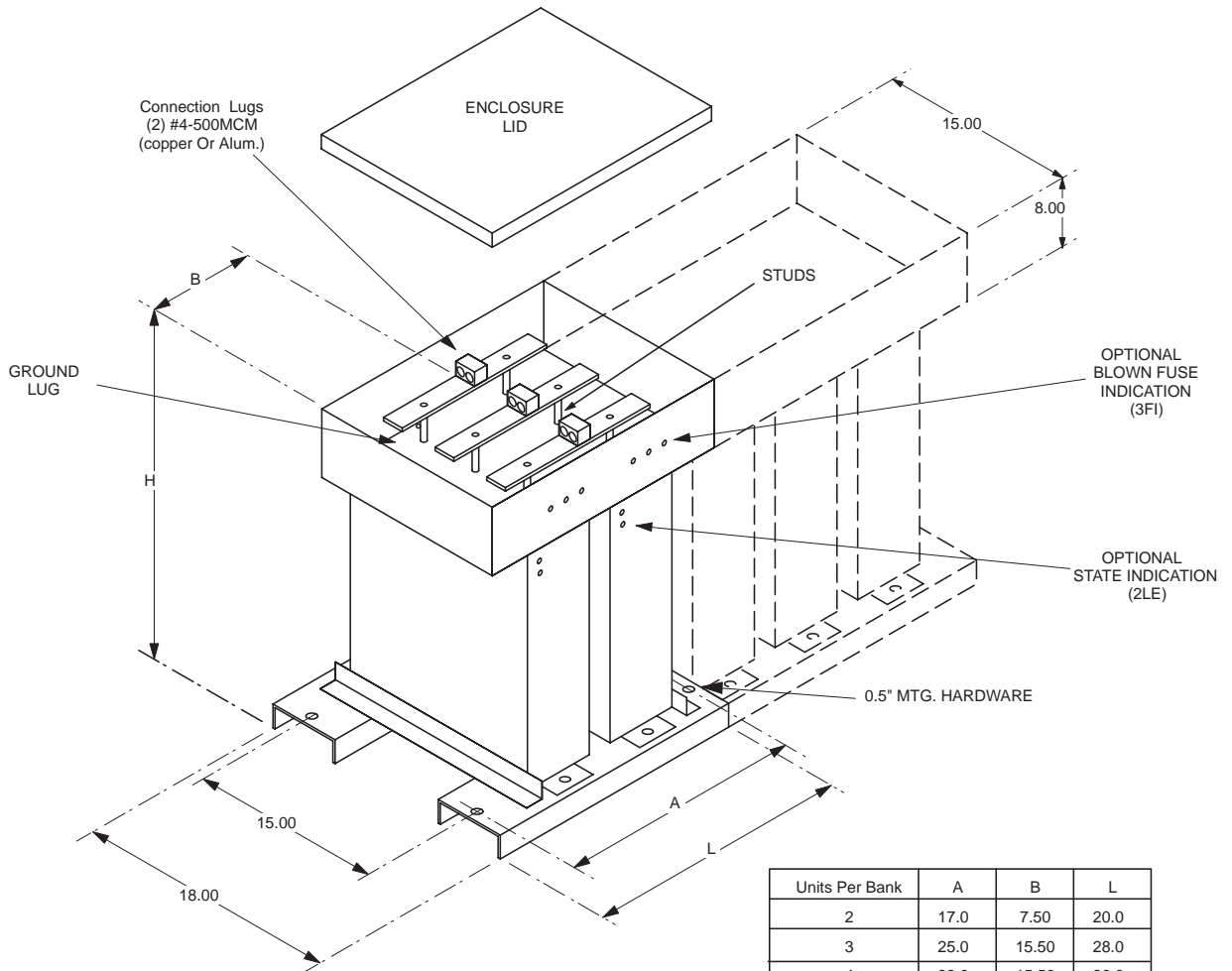
| Type | Catalog number | List price adder |
|---|----------------|------------------|
| Wall mounting kit, 2 – 6 units per bank | FBWM | \$ 500 |

NOTE: ABB's patented IPE design eliminates the need for additional overcurrent protection when capacitors are electrically connected on the load side of a motor starter circuit breaker or fusible disconnect switch.

Approximate dimensions Fixed capacitor banks

← 00.00 → Inches

Fixed capacitor banks



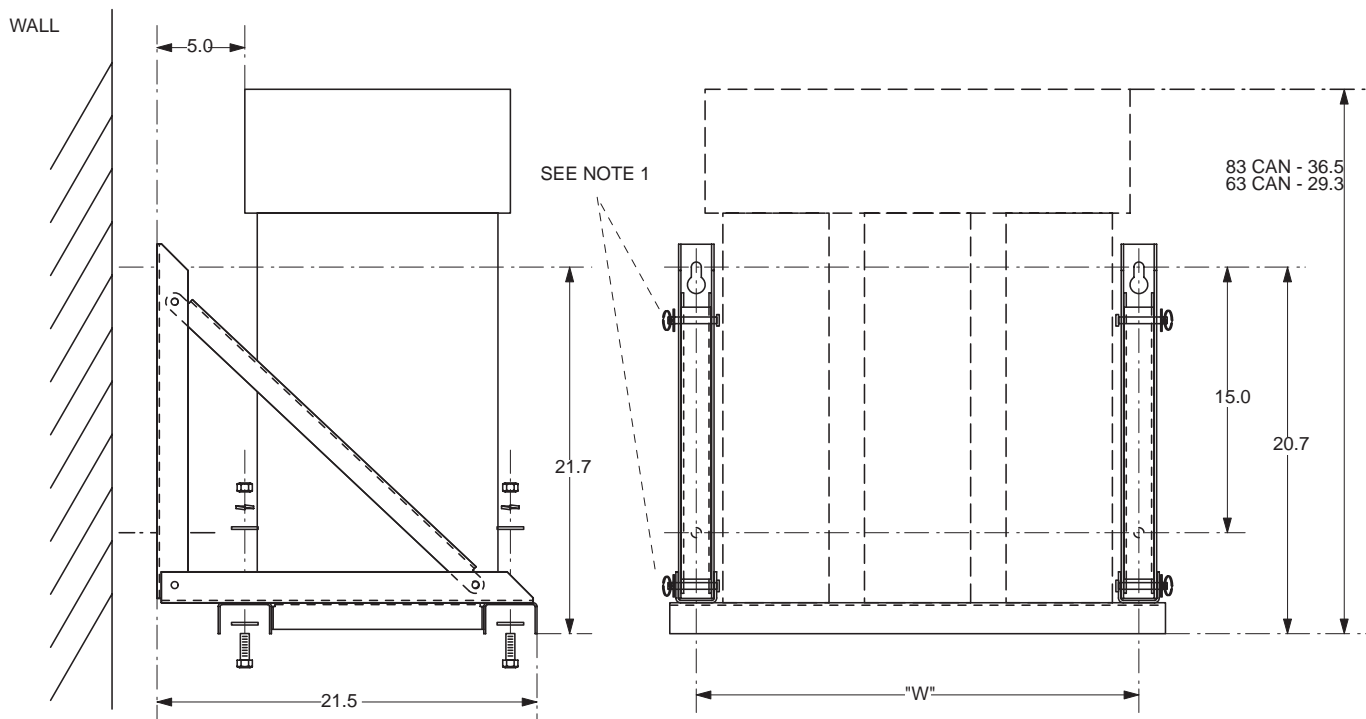
| Units Per Bank | A | B | L |
|----------------|------|-------|------|
| 2 | 17.0 | 7.50 | 20.0 |
| 3 | 25.0 | 15.50 | 28.0 |
| 4 | 33.0 | 15.50 | 36.0 |
| 5 | 41.0 | 15.50 | 44.0 |
| 6 | 49.0 | 22.50 | 52.0 |

| Unit Size | H |
|-----------|-------|
| CLMD-53 | 22.50 |
| CLMD-63 | 29.50 |
| CLMD-83 | 36.50 |

Approximate dimensions Fixed capacitor banks

← 00.00 → Inches

Fixed bank wall mounting



NOTE 1: POSITION SPLIT RINGS TOWARD OUTSIDE OF BANK

| NO. OF CAPS | MTG WIDTH "W" |
|-------------|---------------|
| 2 | 17.0 |
| 3 | 25.0 |
| 4 | 33.0 |
| 5 | 41.0 |
| 6 | 49.0 |

MOUNT CAPACITOR ASSEMBLY TO WALL USING FOUR (4) 1/2" BOLTS. "KEY HOLE" MOUNTING HOLES ARE PROVIDED AT TOP OF MOUNTING BRACKETS.

WALL MOUNTING BRACKETS ARE ATTACHED TO FIXED BANK USING FOUR (4) 1/2-13 X 1.25" BOLTS AS SHOWN. TORQUE HARDWARE TO 50 LBS-FT.