

## Individual capacitors

### Type CLMD-13SC, Stud connected

### 208, 240, 480 & 600 Volt, 60 Hz



The CLMD-13SC (Stud Connected) capacitor is ideally suited for use in motor control centers, control panels and other indoor applications. Standard features include:

- Indoor, steel enclosure with cover
- Three stud terminals for electrical connection or capacitor parallel bus bar connection
- Mounting feet for easy capacitor installation
- Lightweight, small dimensions, totally dry construction

#### 208 Volt, 60 Hz, 3 phase

Enclosure size	kvar rating	Rated current per phase (amps)	Approx. shipping weight (lbs)	Enclosure type	
				Indoor — NEMA 1	
				Catalog number	List price
13	0.8	2.2	6	C201G0.8SC	<b>\$ 136</b>
	1.1	3.1	6	C201G1.1SC	<b>141</b>
	2	5.6	6	C201G2SC	<b>152</b>
	2.5	6.9	6	C201G2.5SC	<b>163</b>
	3	8.3	6	C201G3SC	<b>179</b>
	4	11.1	6	C201G4SC	<b>211</b>
	5	13.9	6	C201G5SC	<b>254</b>
	7.5	20.8	6	C201G7.5SC	<b>286</b>

#### 600 Volt, 60 Hz, 3 phase

Enclosure size	kvar rating	Rated current per phase (amps)	Approx. shipping weight (lbs)	Enclosure type	
				Indoor — NEMA 1	
				Catalog number	List price
13	2	1.9	6	C601G2SC	<b>\$ 147</b>
	3	2.9	6	C601G3SC	<b>163</b>
	4	3.8	6	C601G4SC	<b>168</b>
	5	4.8	6	C601G5SC	<b>179</b>
	7.5	7.2	6	C601G7.5SC	<b>189</b>
	10	9.6	6	C601G10SC	<b>205</b>
	15	14.4	6	C601G15SC	<b>232</b>

**NOTE:** ABB's patented IPE design eliminates the need for additional overcurrent protection when capacitors are electrically connected on the load side of a motor starter circuit breaker or fusible disconnect switch.

#### 240 Volt, 60 Hz, 3 phase

Enclosure size	kvar rating	Rated current per phase (amps)	Approx. shipping weight (lbs)	Enclosure type	
				Indoor — NEMA 1	
				Catalog number	List price
13	1	2.4	6	C241G1SC	<b>\$ 130</b>
	1.5	3.6	6	C241G1.5SC	<b>147</b>
	2	4.8	6	C241G2SC	<b>141</b>
	2.5	6.0	6	C241G2.5SC	<b>157</b>
	3.5	8.4	6	C241G3.5SC	<b>173</b>
	5	12.0	6	C241G5SC	<b>184</b>
	7.5	18.0	6	C241G7.5SC	<b>232</b>
	10	24.1	6	C241G10SC	<b>270</b>

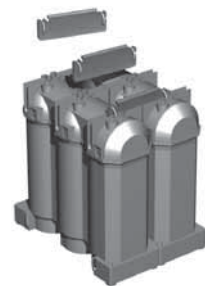
#### 480 Volt, 60 Hz, 3 phase

Enclosure size	kvar rating	Rated current per phase (amps)	Approx. shipping weight (lbs)	Enclosure type	
				Indoor — NEMA 1	
				Catalog number	List price
13	0.9	1.1	6	C481G0.9SC	<b>\$ 130</b>
	1.5	1.8	6	C481G1.5SC	<b>141</b>
	2	2.4	6	C481G2SC	<b>147</b>
	2.5	3.0	6	C481G2.5SC	<b>152</b>
	3.5	4.2	6	C481G3.5SC	<b>168</b>
	4	4.8	6	C481G4SC	<b>170</b>
	5	6.0	6	C481G5SC	<b>179</b>
	6	7.2	6	C481G6SC	<b>184</b>
	7.5	9.0	6	C481G7.5SC	<b>189</b>
	8	9.6	6	C481G8SC	<b>195</b>
	9	10.8	6	C481G9SC	<b>200</b>
	10	12.0	6	C481G10SC	<b>205</b>
	14	16.8	6	C481G14SC	<b>216</b>
	15	18.0	6	C481G15SC	<b>227</b>
	17	20.4	6	C481G17SC	<b>238</b>

## Individual capacitors Type LVCS 240, 480 & 600 Volt, 60 Hz



20.032.86349



20.910.86783

### Description

The LVCS is a compact and powerful capacitor ready for connection. It offers high modularity, unmatched performances and a state of the art integrated protection system. The LVCS wide power and voltage ranges allow its use for all power factor correction systems with or without reactors.

- High power density – small dimensions
- Modular design for easy and quick assembly of power modules
- Indoor enclosure
- Innovative integrated protection system
- Double casing insulation
- Built-in discharge devices
- Fully automated manufacturing process
- Complies with international standards, CE marked, UL recognized and CSA certified

### Interconnection bars

Item	Catalog number	List price
Set of 3	20.910.86783	<b>\$ 10</b>
Set of 30	20.910.86784	<b>30</b>

### 240 Volt, 60 Hz, 3 phase

kvar rating	Rated current per phase (amps)	Approx. weight unpacked (lbs.)	Catalog number	List price
6.3	15.2	5.5	20.032.86349	<b>\$ 192</b>
10.0	24.1	5.5	20.032.86350	<b>249</b>
12.5	30.1	5.5	20.032.86351	<b>295</b>

### 480 Volt, 60 Hz, 3 phase

kvar rating	Rated current per phase (amps)	Approx. weight unpacked (lbs.)	Catalog number	List price
10.0	12.0	5.5	20.032.86363	<b>\$ 187</b>
12.5	15.0	5.5	20.032.86364	<b>204</b>
15.0	18.0	5.5	20.032.86365	<b>198</b>
20.0	24.1	5.5	20.032.86366	<b>237</b>
25.0	30.1	5.5	20.032.86367	<b>269</b>

### 600 Volt, 60 Hz, 3 phase

kvar rating	Rated current per phase (amps)	Approx. weight unpacked (lbs.)	Catalog number	List price
10.0	9.6	5.5	20.032.86370	<b>\$ 200</b>
12.5	12.0	5.5	20.032.86371	<b>219</b>
20.0	19.2	5.5	20.032.86372	<b>238</b>
25.0	24.1	5.5	20.032.86373	<b>286</b>