

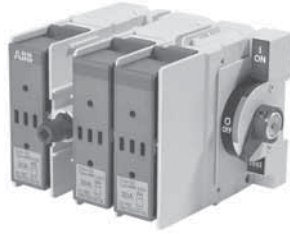
## Other configurations

Side operated ①

30A – 400A, UL fuse class J,CC,T

For a complete assembly, please select one of each:

- 1 switch
- 1 handle
- 1 shaft
- 1 terminal lug



OS30A\_S\_



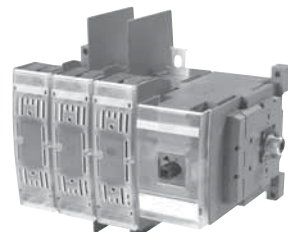
OXP5X170



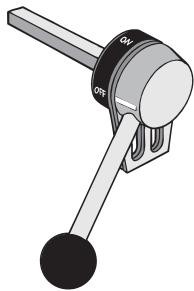
OHY65J5TE00S



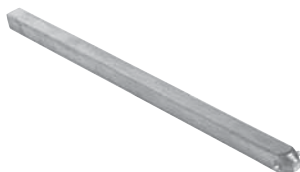
OS60JS30



OS100JS30



OETL-ZX74



OZXA-25

### Side operated switches — 3 pole

UL general purpose amp rating	UL fuse type 600V	Maximum horsepower rating					Weight (lbs)	Catalog number	List price
		Three phase							
		200V	208V	240V	480V	600V			
30	J	5	7.5	7.5	15	20	1.54	OS30AJS30	\$ 360
30	CC	5	7.5	7.5	15	20	1.54	OS30ACCS30	360
60	J	15	15	15	30	50	3.52	OS60JS30	540
100	J <sup>①</sup>	25	25	30	60	75	3.97	OS100JS30	640
200	J <sup>①</sup>	50	50	60	125	150	15.21	OES200J3-S	1800
400	J <sup>①</sup>	100	125	125	250	350	17.20	OES400J3-S	2600

### Handles

UL/NEMA type	IEC type	Color	Length inches/mm	Marking	Defeat-able	Padlock-able	Weight	Catalog number	List price
<b>For use with O</b>									
1, 3R, 12	IP65	Black	2.6/65	OFF/ON	Yes	Yes	0.29	OHB65J5	\$ 80
1, 3R, 12	IP65	Red/Yel	2.6/65	OFF/ON	Yes	Yes	0.29	OHY65J5	
<b>For use with O</b>									
1, 3R, 12	IP65	Black	3.1/80	OFF/ON	Yes	Yes	0.30	OHB80J6	90
1, 3R, 12	IP65	Red/Yel	3.1/80	OFF/ON	Yes	Yes	0.30	OHY80J6	
<b>For use with O</b>									
1, 3R, 12	IP65	Black	4.9/145	OFF/ON	Yes	Yes	0.39	OHB145J12	80
1, 3R, 12	IP65	Red/Yel	4.9/145	OFF/ON	Yes	Yes	0.39	OHY145J12	
1, 3R, 12	IP65	Metal	4.9/145	OFF/ON	No	Yes	1.50	OETL-ZX74	190

### Shafts

For use with:	Length (inches/mm)	Description	Weight (lbs.)	Catalog number	List price
OS30AJS30 & OS30ACCS30	6.7/170	0.20 x 0.20" (5 x 5mm)	0.08	OXP5X170	\$ 16
OS60JS30 & OS100JS30	6.7/170	0.24 x 0.24" (6 x 6mm)	0.08	OXP6X210	16
OES200J3-S & OES400J3-S	12.8/325	0.47 x 0.47" (12 x 12mm)	0.90	OXP12X325	40

### Terminal lug kit

For use on:	Wire size	Kit weight (lbs)	Wire type	Lugs per kit	Catalog number	List price
OS30AJS30 & OS30ACCS30	#18 – 8	—	Cu	—	Integral	—
OS60JS30	#14 – 4	—	Cu	—	Integral	—
OS100JS30	#14 – 2/0	0.43	Cu/Al	6	OZXA-24	\$ 24
OES200J3-S	#6 – 300 kcmil	0.93	Cu/Al	6	OZXA-25	80
OES400J3-S	#2 – 600 kcmil	3.50	Cu/Al	6	OZXA-26	190

① J type fuse clips are standard. If 600V Type "T" fuse clips are desired, please order the "T" type fuse adapter kit.