

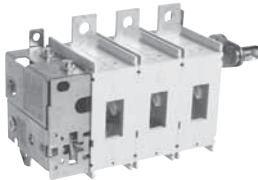
# Flange operated disconnect switches

## Shaft operated non-fusible

### 30A - 200A

Disconnect  
switches  
Non-fusible

For a complete assembly, please select one of each.



Switch



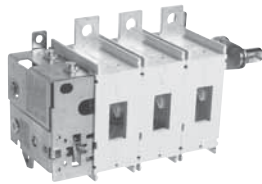
Handle



Shaft



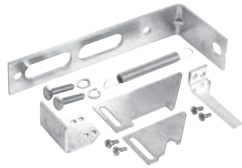
Lug kit (as required)



OETL-NF200A-F



DSFHN-HS12



DSFHS-12

### 30A -200A Flange operated non fusible switches (Shaft) - 3 pole

UL general purpose amp rating	Maximum horsepower rating					Catalog number	List price
	Three phase						
	200V	208V	240V	480V	600V		
30	10	10	10	20	30	OT30E3-F	\$ 500
60	20	20	20	40	40	OT60E3-F	590
100	25	25	25	50	40	OT100E3-F	690
200	60	60	75	150	200	OETL-NF200A-F	890

### Flange handles for use with OT30\_, OT60\_, OT100\_ and OETL-NF200\_

UL/ NEMA type	Marking	Defeatable	Padlockable	Catalog number	List price
1, 3R, 12	OFF/ON	Yes	Yes	DSFHN-HS12	\$ 156
4, 4X	OFF/ON	Yes	Yes	DSFHN-HS4	240

### Shafts

For use with:	Maximum enclosure depth (inches)	Catalog number	List price
OT30_ - OT100_	16	OTFS-16	\$ 25
OT30_ - OT100_	24	OTFS-24	30
OETL-NF200A-F	16	DSFHS-12	28
OETL-NF200A-F	21	DSFHS-17	40
OETL-NF200A-F	26.5	DSFHS-22	52

### Flange operated fusible and non-fusible disconnect switches

ABB's solution for complying with the new NFPA79 requirements is Flange Operated Fusible and Non-fusible Disconnect Switches.

New 2002 NFPA 79 changes requires main disconnecting means to be operable without the use of accessory tools or devices, independent of door position. This code also includes an interlocking provision to prevent the closing of disconnects while the enclosure door is open, unless an interlock is operated by a deliberate action.

The flange operated disconnect switches are available as ridged shaft or flexible cable operated versions. The cable operated version allows you to install the disconnect switch anywhere in the enclosure depending on the length of the cable. Cables are available in lengths up to 84 inches.

The designs are cost-effective NFPA 79 solutions offering quick and easy installation.