

Disconnect
switches
Non-fusible

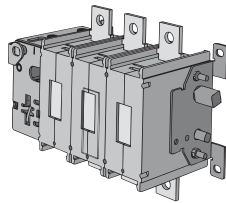
Other configurations

Side operated

30A – 800A^{①②}

For a complete assembly,
please select one of each:

- 1 switch
- 1 handle
- 1 shaft
- 1 terminal lug kit



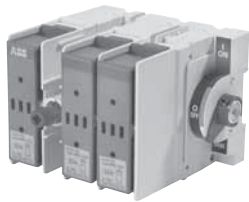
OETL-NF200A-S



EXP8X240



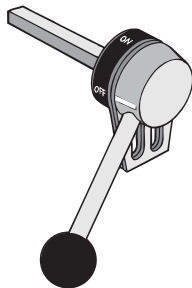
OHB80J8TE00S



OSNF30-S



OHY_J



OETL-ZX74



EXP5X170
EXP8X240
EXP12X325



OZXA-24



OZXA-25



OZXA-26



OZXA-27

Side operated switches – 3 pole

UL general purpose amp rating	IEC AC21 amp rating	Maximum horsepower rating					Weight (lbs)	Catalog number	List Price
		Three phase							
		200V	208V	240V	480V	600V			
30	32	5	7.5	7.5	15	20	1.90	OSNF30-S	\$ 380
60	63	15	15	15	30	50	3.90	OSNF60-S	560
100	125	25	25	30	60	75	4.50	OSNF100-S	660
200	250	60	60	75	150	200	6.61	OETL-NF200A-S	780
400	630	100	100	125	250	350	13.66	OETL-NF400-S	1500
600	800	150	150	200	400	500	13.66	OETL-NF600A-S	2400

Handles

UL/NEMA type	Color	Length inches/mm	Marking	Defeat-able	Padlock-able	Weight (lbs)	Catalog number	List price
For use with OSNF30-S								
1, 12, 3R	Black	2.65/65	O/I & Off/On	Yes	Yes	0.29	OHB65J5	\$ 80
1, 12, 3R	Red/Yel	2.65/65	O/I & Off/On	Yes	Yes	0.29	OHY65J5	
For use with OSNF60-S – OSNF100-S								
1, 12, 3R	Black	3.1/80	O/I & Off/On	Yes	Yes	0.30	OHB80J6	80
1, 12, 3R	Red/Yel	3.1/80	O/I & Off/On	Yes	Yes	0.30	OHY80J6	
For use with OETL-NF200A-S								
1, 12, 3R	Black	3.1/80	O/I & Off/On	Yes	Yes	0.30	OHB80J8	80
1, 12, 3R	Red/Yel	3.1/80	O/I & Off/On	Yes	Yes	0.30	OHY80J8	
For use with OETL-400DM1 – OETL-NF600A-S								
1, 12, 3R	Black	4.9/145	O/I & Off/On	Yes	Yes	0.39	OHB145J12	80
1, 12, 3R	Red/Yel	4.9/145	O/I & Off/On	Yes	Yes	0.39	OHY145J12	80
1, 12, 3R	Metal	4.9/145	Off/On	Yes	Yes	1.50	OETL-ZX74	190

Shafts

For use with:	Length inches/mm	Description	Weight (lbs)	Catalog number	List price
OSNF30-S	6.7/170	.20 x .20" (5 x 5mm)	0.08	EXP5X170	\$ 16
OSNF60-S – OSNF100-S	8.3/210	.24 x .24" (6 x 6mm)	0.10	EXP6X210	16
OETL-NF175-S – OETL-NF200A-S	9.5/240	.31 x .31" (8 x 8mm)	0.26	EXP8X240	24
OETL-NF400-S – OETL-NF600A-S	12.8/325	.47 X .47" (12 X 12mm)	0.90	EXP12X325	40

Terminal lug kits

For use on:	Wire size	Weight	Wire type	Lugs per kit	Catalog number	List price
OSNF30-S	#18 – 8	—	Cu	—	Integral	—
OSNF60-S	#14 – 4	—	Cu	—	Integral	—
OSNF100-S	#14 – 2/0	0.43	Cu/Al	6	OZXA-24	\$ 24
OETL-NF200A-S	#6 – 300 kcmil	0.93	Cu/Al	6	OZXA-25	80
OETL-NF400-S	#2 – 600 kcmil	3.520	Cu/Al	6	OZXA-26	190
OETL-NF600A-S	(2) #2 – 600 kcmil	4.62	Cu/Al	6	OZXA-27	380

① Side operated switches available through 800A as IEC rated.
② Please consult factory for additional information.

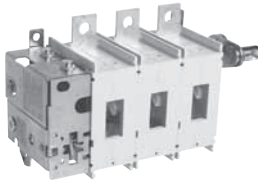
Flange operated disconnect switches

Shaft operated non-fusible

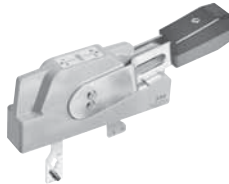
30A - 200A

Disconnect
switches
Non-fusible

For a complete assembly, please select one of each.



Switch



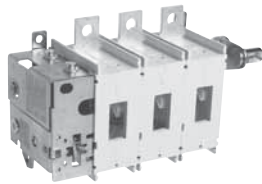
Handle



Shaft



Lug kit (as required)



OETL-NF200A-F



DSFHN-HS12



DSFHS-12

30A -200A Flange operated non fusible switches (Shaft) - 3 pole

UL general purpose amp rating	Maximum horsepower rating					Catalog number	List price
	Three phase						
	200V	208V	240V	480V	600V		
30	10	10	10	20	30	OT30E3-F	\$ 500
60	20	20	20	40	40	OT60E3-F	590
100	25	25	25	50	40	OT100E3-F	690
200	60	60	75	150	200	OETL-NF200A-F	890

Flange handles for use with OT30_, OT60_, OT100_ and OETL-NF200_

UL/ NEMA type	Marking	Defeatable	Padlockable	Catalog number	List price
1, 3R, 12	OFF/ON	Yes	Yes	DSFHN-HS12	\$ 156
4, 4X	OFF/ON	Yes	Yes	DSFHN-HS4	240

Shafts

For use with:	Maximum enclosure depth (inches)	Catalog number	List price
OT30_ - OT100_	16	OTFS-16	\$ 25
OT30_ - OT100_	24	OTFS-24	30
OETL-NF200A-F	16	DSFHS-12	28
OETL-NF200A-F	21	DSFHS-17	40
OETL-NF200A-F	26.5	DSFHS-22	52

Flange operated fusible and non-fusible disconnect switches

ABB's solution for complying with the new NFPA79 requirements is Flange Operated Fusible and Non-fusible Disconnect Switches.

New 2002 NFPA 79 changes requires main disconnecting means to be operable without the use of accessory tools or devices, independent of door position. This code also includes an interlocking provision to prevent the closing of disconnects while the enclosure door is open, unless an interlock is operated by a deliberate action.

The flange operated disconnect switches are available as ridged shaft or flexible cable operated versions. The cable operated version allows you to install the disconnect switch anywhere in the enclosure depending on the length of the cable. Cables are available in lengths up to 84 inches.

The designs are cost-effective NFPA 79 solutions offering quick and easy installation.