

Disconnect
switches
Non-fusible

General information

Selection guide

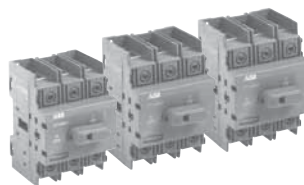
OT16E3 – OT160E3



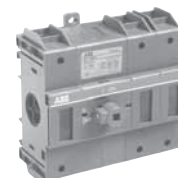
OT16E3 OT25E3 OT32E3



OT45E3 OT63E3



OT30E3 OT60E3 OT100E3



OT160E3

Catalog number	3 pole	OT16E3	OT25E3	OT32E3	OT45E3	OT63E3	OT30E3	OT60E3	OT100E3	OT160E3
General purpose amp rating	A	16	25	40	60	80	30	60	100	125
Catalog reference	Page #	18.10	18.10	18.10	18.10	18.10	18.10	18.10	18.10	18.20
Approvals ①										
	2 pole	N/A	N/A	N/A	N/A	N/A	N/A	N/A	N/A	UL98
	3 pole	UL508	UL508	UL508	UL508	UL508	UL98	UL98	UL98	UL98
	4 pole	UL508	UL508	UL508	UL508	UL508	UL98	UL98	UL98	UL98
Technical ratings – UL, CSA ②										
Max operating voltage	V	600	600	600	600	600	600	600	600	600
Max horsepower rating										
Three phase										
200 – 208V	HP	3	7.5	10	15	20	10	20	25	30
240V	HP	5	7.5	10	15	20	10	20	30	40
480V	HP	10	15	20	30	40	20	40	50	75
600V	HP	10	20	25	30	40	30	40	50	100
Single phase										
120V	HP	1	1.5	2	2	2	2	3	5	7.5
240V	HP	2	3	5	5	5	5	7.5	15	20
Technical ratings – IEC ③										
Rated insulation and operational voltage, AC20 and DC20	V	750	750	750	750	750	750	750	750	750
Rated thermal current, I _{th}										
AC 20/DC 20 open	A	25	32	40	63	80	40	63	115	200
AC 20/DC 20 enclosed	A	25	32	40	63	80	40	63	115	160
AC 21A ≤500V	A	16	25	32	63	80	40	63	100	160
AC 21A ≤690V	A	16	25	32	63	80	40	63	100	160
Rated operational power AC23										
400/415V	kW	7.5	9	11	22	37	15	18.5	37	75
690V	kW	7.5	9	11	15	18.5	15	15	37	75
Physical characteristics										
Weight ③	3 pole lb	0.24	0.24	0.24	0.59	0.59	0.79	0.79	0.79	2.42
Dimension	3 pole H in	2.68	2.68	2.68	3.60	3.60	3.94	3.94	3.94	5.00
	W in	1.38	1.38	1.38	2.07	2.07	2.76	2.76	2.76	4.96
	D in	2.20	2.20	2.20	2.85	2.85	2.95	2.95	2.95	2.93
Accessories										
Terminal lug kit		Integral	Integral	Integral	Integral	Integral	Integral	Integral	Integral	Integral
Terminal shroud		•	•	•	•	•	•	•	•	—
Auxiliary contact		•	•	•	•	•	•	•	•	•
Handle UL/NEMA type	Type 1, 3R, 12	•	•	•	•	•	•	•	•	•
	Type 1, 3R, 4, 4X, 12	•	•	•	•	•	•	•	•	•
	Handle type									
Selector		•	•	•	•	•	•	•	•	—
Pistol		•	•	•	•	•	•	•	•	•
Conversion kits	6 pole	•	•	•	•	•	•	•	•	•
	Transfer	•	•	•	•	•	•	•	•	•
	Bypass	•	•	•	•	•	•	•	•	•
	Mechanical interlock	•	•	•	•	•	•	•	•	•
Electrical interlock		—	—	—	—	—	—	—	—	—

• = Available
— = Not available

UL listed, CSA approved, IEC rated, CE marked

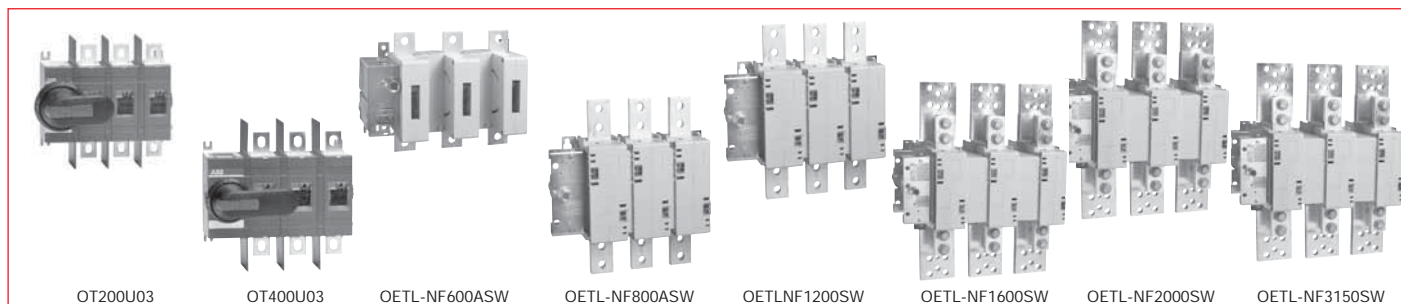
① UL listed switches are also CSA approved.
② For complete technical information please see page 18.43 – 18.74.
③ Switch only.

General information

Selection guide

OT200 – OT400 & OETL-NF600A – OETL-NF3150

Disconnect
switches
Non-fusible



Catalog number	3 pole	OT200U03	OT400U03	OETL-NF600A	OETL-NF800A	OETL-NF1200	OETL-NF1600	OETL-NF2000	OETL-NF3150
General purpose amp rating	A	200	400	600	800	1200	1600	2000	3150
Catalog reference	Page #	18.23	18.26	18.26	18.26	18.30	18.30	18.30	18.30
Approvals ^①	2 pole 3 pole 4 pole	UL98 & IEC UL98 & IEC IEC	UL98 & IEC UL98 & IEC UL98 & IEC	UL98 & IEC UL98 & IEC UL98 & IEC	UL98 & IEC UL98 & IEC IEC	UL98 & IEC UL98 & IEC IEC	UL98 & IEC UL98 & IEC IEC	UL98 & IEC UL98 & IEC IEC	IEC IEC IEC
Technical ratings – UL, CSA ②									
Max operating voltage	V	600	600	600	600	600	600	600	600
Max horsepower rating									
Three phase									
200 – 208V	HP	60	100	150	200	—	—	—	—
240V	HP	75	125	200	250	—	—	—	—
480V	HP	150	250	400	500	—	—	—	—
600V	HP	200	350	500	600	—	—	—	—
Single phase									
120V	HP	—	—	—	—	—	—	—	—
240V	HP	—	—	—	—	—	—	—	—
Technical ratings – IEC ②									
Rated insulation and operational voltage, AC20 and DC20	V	1000	1000	1000	1000	1000	1000	1000	1000
Rated thermal current, I _n									
AC 20/DC 20 open	A	250	400	800	1250	1600	2500	2500	3150
AC 20/DC 20 enclosed	A	250	400	720	1250	1600	2300	2300	2600
AC 21A ≤500V	A	250	400	800	1250	1600	2500 ^④	2500 ^④	3150 ^④
≤690V	A	250	400	800	1250	1600	2500 ^④	2500 ^④	3150 ^④
Rated operational power AC23									
400/415V	kW	132	220	355	400	400	400	400	400
690V	kW	240	355	355	—	—	—	—	—
Physical characteristics									
Weight ③	3 pole lb	2.9	5.7	13.66	35.9	38.55	127.7	127.7	127.7
Dimension	3 pole								
H	in	6.69	8.66	11.77	19.09	19.09	25.04	25.04	25.04
W	in	6.67	8.7	11.93	14.29	14.29	18.43	18.43	18.43
D	in	3.30	3.35	5.12	4.92	4.92	10.67	10.67	10.67
Accessories									
Terminal lug kit		OZXA-200	OZXA-400	OZXA-27	OZXA-30	OZXA-28	OZXA-28	OZXA-28/2	OZXA-28/2
Terminal shroud		•	•	•	•	•	—	—	—
Auxiliary contact		•	•	•	•	•	•	•	•
Handle UL/NEMA type									
Type 1, 3R, 12		•	•	•	•	•	•	•	•
Type 1, 3R, 4, 4X, 12		•	•	•	•	•	•	•	•
Handle type									
Selector		—	—	—	—	—	—	—	—
Pistol		•	•	•	•	•	•	•	•
Conversion kits									
6 pole		•	•	•	•	•	—	—	—
Transfer		•	•	•	•	•	—	—	—
Bypass		•	•	•	•	•	—	—	—
Mechanical interlock		•	•	•	•	•	•	•	•
Electrical interlock		•	•	•	•	•	•	•	•

S = Standard feature
• = Available
— = Not available

UL listed, CSA approved, IEC rated, CE marked

① UL listed switches are also CSA approved.
② For complete technical information please see page 18.43 – 18.74.
③ Switch only
④ IEC 947-3 Utilization Category B, Infrequent operation