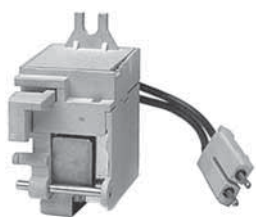


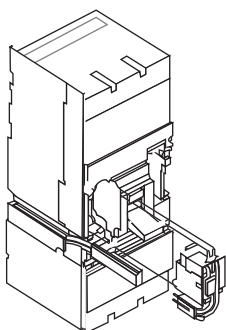
Electrical accessories

Shunt trip, undervoltage release

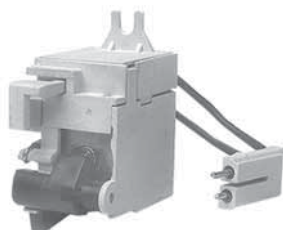
S3 – S7



K5S1



S5 with K5S2



K5U1



K6C-SUP

Shunt trips

Voltage	Factory installation		Field installation		List price
	Catalog number suffix ①	List price adder	Catalog numbers		
			S3 – S4 – S5	S6 – S7	
480VAC/250VDC	S1	\$ 430	K5S1	K7S1	\$ 415
240VAC	S2		K5S2	K7S2	
120VAC/125VDC	S4		K5S4	K7S4	
48VDC	S7		K5S7	K7S7	
24VAC/VDC	S8		K5S8	K7S8	
12VDC	S9		K5S9	K7S9	

Low power shunt trips

Voltage	Factory installation		Field installation		List price
	Catalog number suffix ①	List price adder	Catalog numbers		
			S3 – S4 – S5	S6 – S7	
24VDC	SA	\$ 430	K5SA	K7SA	\$ 415
120VAC	SB		K5SB	K7SB	

For remote opening of circuit breaker and includes internal cut-off switch to protect solenoid. All shunt trips are left pole mounted and can not be used with UVRs. Except for 12VDC, all shunt trips are approved for use in GF systems. Shunt trips must be ordered with correct connector.

Shunt trip connectors (required)

Type circuit breaker	Voltage	Factory installation ①	Field kit catalog number		List price
			S3 – S4 – S5 – S6	S7	
Fixed mounted	All	included	K6C-SU	K7C-SU	\$ 15
Plug-in/Draw-out	All	included	K6C-SUP	K7C-SUP	

Electrical specifications – shunt trips (standard)

V	24, 120, 240, 480VAC ~ 50/60 Hz 12, 24, 48, 125, 250 VDC –
For S3-S5 P	100 VA~/120W- Instantaneous duty
For S6-S7	150 VA~/150W-

Undervoltage releases

Voltage	Factory installation		Field installation		List price
	Catalog number suffix ①	List price adder	Catalog numbers		
			S3 – S4 – S5	S6 – S7	
480VAC	U1	\$ 430	K5U1	K7U1	\$ 415
240VAC	U2		K5U2	K7U2	
120VAC	U4		K5U4	K7U4	
24VAC	U3		K5U3	K7U3	
250VDC	U5		K5U5	K7U5	
125VDC	U6		K5U6	K7U6	
48VDC	U7		K5U7	K7U7	
24VDC	U8		K5U8	K7U8	

Will trip CB when connected voltage drops to 35-70% of UVR voltage rating. Will allow CB to close (ON) when voltage is approximately 85% of rated voltage. All UVRs are left pole mounted and can not be used with shunt trips. UVRs must be ordered with correct connector.

Undervoltage release connectors (required)

Type circuit breaker	Voltage	Factory installation ①	Field kit catalog number		List price
			S3 – S4 – S5 – S6	S7	
Fixed mounted	All	included	K6C-SU	K7C-SU	\$ 15
Plug-in/Draw-out	All	included	K6C-SUP	K7C-SUP	

Electrical specifications – UVR & low power shunt trips

V	24, 120, 240, 480 VAC ~ 50/60 Hz 24, 48, 125, 250 VDC –
For S3-S5 P	6 VA~/3W- Continuous duty
For S6-S7	10 VA~/4W-

① For factory installation add suffix given to end of circuit breaker catalog number per accessory format.

Electrical accessories

Auxiliary contacts

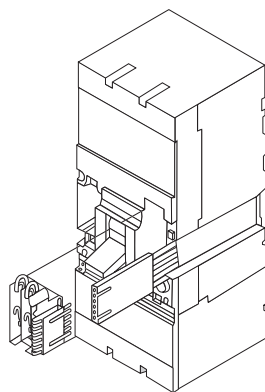
S3 – S7



K5AS



K6C-ABP



S5 with K6C-AB

Auxiliary contacts — S3 – S7

Contacts	Factory installation		Field installation		
	Catalog number suffix ^①	List price adder	Catalog numbers		List price
2 Form Cs	A	\$ 275	S3 – S4 – S5	S6 – S7	\$ 260
1 BA & 1 C	BA	365	K5AS	K7AS	350
1 B BA & 1A + 1B	BA3		—	K7BA K7BA-3	

The auxiliary contacts are accessory contacts for the indication of circuit breaker open-closed or tripped. Bell alarm contacts (B.A.) can be used to indicate circuit breaker tripping. All contacts are right pole mounted.

Auxiliary contact connectors (required) — S3 – S7

Type circuit breaker	Voltage	Factory installation ^①	Field kit catalog number		List price
			S3 – S4 -- S5 – S6	S7	
Fixed mounted	All	included	K6C-AB	K7C-AB	\$ 15
Plug-in/Draw-out	All	included	K6C-ABP	K7C-ABP	

Electrical specifications

Voltage	Maximum contact amperage rating
125 VDC	0.3 A
250 VDC	0.15 A
250 VAC	6 A

N.O. = contact is open as circuit breaker is open
 N.C. = contact is closed when circuit breaker is open
 B.A. = will open/close only when circuit breaker trips

^① For factory installation add suffix given to end of circuit breaker catalog number per accessory format.
^② Not UL approved for field installation.

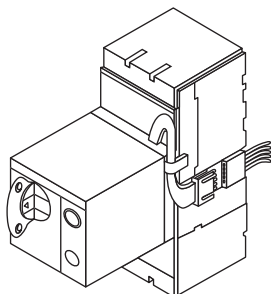
Electrical accessories

Motor operators, stored energy motor operators S3 – S7

Isomax
MCCBs



K5M2



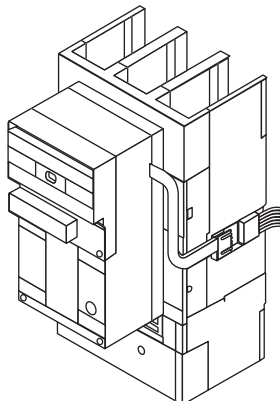
S4 with K5M2



K6C-M



K6M2



S7 with K7M4

Motor operator

Voltage	Catalog number S3 – S4 – S5	List price
240VAC/250VDC 120VAC/125VDC 48VDC 24VDC	K5M2 K5M4 K5M7 K5M8	\$ 678

For remote control of circuit breaker opening and closing.
Complete with manual operating lever, padlock device and emergency opening push-button.
When ordering the connector always specify type and version of the circuit-breaker.

The following options are also available:

- key lock for open position
- key lock for open position of two or more circuit breakers (using the same key for groups of circuit breakers)

Motor operator connectors (required)

Type circuit breaker	Voltage	Field kit catalog number S3 – S4 – S5	List price
Fixed mounted Plug-in/Draw-out	All All	K6C-M K6C-MP	\$ 15

Electrical specifications

V	120, 240VAC ~ 50/60 Hz 24, 48, 125, 250 VDC -
P inrush	500 VA~/500W-
P normal	350 VA~/500W-
Close time	0.1 s
Open time	0.1 s

Stored-energy motor operator

Voltage	Catalog number		List price
	S6	S7	
240VAC/250VDC 120VAC/125VDC 48VDC 24VDC	K6M2 K6M4 K6M7 K6M8	K7M2 K7M4 K7M7 K7M8	\$ 2407

- Stored-energy motor operator with springs automatically pre-loaded by motor.
- Complete with shunt opening and closing release, and compartment door flange.
- When ordering the connector always specify type and version of the circuit-breaker.
- The following options are also available:
 - key lock for open position
 - key lock for open position of two or more circuit-breakers (using the same key for groups of circuit-breakers).

Stored-energy motor operator connectors (required)

Type circuit breaker	Voltage	Field kit catalog number		List price
		S6	S7	
Fixed mounted Plug-in/Draw-out	All All	K6C-M K6C-MP	K7C-M K7C-MP	\$ 15

Electrical specifications

V	120, 240 VAC ~ 50/60 Hz 24, 48, 125, 250 VDC -
P inrush	660 VA~/600W-
P normal	180 VA~/180W-
Close time	0.09 s
Open time	1.2 s
Reset time	2.0 s