

Accessories Mechanical T4 - T5



KT5RH

Direct mount rotary operator handle

Item	Catalog number	List Price
Direct mount rotary handle (for fixed and plug-in breakers)	KT5RH	\$ 135
Direct mount rotary handle (for withdrawable breakers)	KT5RHW	

Variable depth rotary handles

Item	Catalog number	List Price
Mechanism	KT5VD-M	\$ 65
NEMA 1, 12, 3R Handle (Black)	OHB95J10 ①	80
NEMA 1, 12, 3R Handle (Grey)	OHG95J10 ①	80
NEMA 4, 4X Handle (Black)	OHB95L10 ①	120
NEMA 4, 4X Handle (Grey)	OHG95L10 ①	120
Shaft (148mm / 5.8 in)	OXF10X148 ①	24
Shaft (225mm / 8.9 in)	OXF10X225 ①	26
Shaft (500mm / 19.7 in)	OXF10X500 ①	32
NEMA 1 Handle, square profile	KT5VD-H	87
Shaft (500mm/19.7in)	KT5VD-S	

Locking devices

	Catalog number	List price
Locking device	KT5FLD	\$ 40
Locking device draw out	KT5FLDW	55

Plug-in kits

Contacts	Breaker adapter kit		Plug-in base	
	Catalog number suffix	List price adder	Catalog number	List Price
T4, 3 pole with extended front terminal	KT4PMK	\$ 250	KT4PFEE	\$ 710
T4, 3 pole with rear horizontal terminal			KT4PFHR	766
T4, 3 pole with rear vertical terminal			KT4PFVR	766
T5, 3 pole with extended front terminal	KT5PMK	350	KT5PFEE	810
T5, 3 pole with rear horizontal terminal			KT5PFHR	866
T5, 3 pole with rear vertical terminal			KT5PFVR	866

Draw-out kits

Contacts	Breaker adapter kit		Plug-in base	
	Catalog number suffix	List price adder	Catalog number	List price
T4, 3 pole with extended front terminal	KT4WMK	\$ 290	KT4WFEF	\$ 816
T4, 3 pole with rear horizontal terminal			KT4WFHR	1021
T4, 3 pole with rear vertical terminal			KT4WFVR	1021
T5, 3 pole with extended front terminal	KT5WMK	407	KT5WFEF	931
T5, 3 pole with rear horizontal terminal			KT5WFHR	1154
T5, 3 pole with rear vertical terminal			KT5WFVR	1154

Standard cable lugs

For breakers	Amps	Wire size	Set of 2 catalog number	List price	Set of 3 catalog number	List price	Set of 4 catalog number	List price
T4	100	14 AWG-1/0	KT4100-2	\$ 6	KT4100-3	\$ 9	KT4100-4	\$ 12
	250	6 AWG - 350 kcmil	KT4250-2	20	KT4250-3	30	KT4250-4	40
T5	300	250kcmil - 500 kcmil	KT5300-2	30	KT5300-3	45	KT5300-4	60
	400	(2) 3/0 - 250 kcmil	KT5400-2	30	KT5400-3	45	KT5400-4	60
T5	600	(2) 3/0 - 500 kcmil	KT5600-2	TBD	KT5600-3	TBD	KT5600-4	TBD

Standard cable lug kits with power control taps

For breakers	Amps	Wire size	Set of 2 catalog number	List price	Set of 3 catalog number	List price	Set of 4 catalog number	List price
T4	100	14 AWG-1/0	KT4100-2C	\$ 10	KT4100-3C	\$ 15	KT4100-4C	\$ 20
	250	6 AWG - 350 kcmil	KT4250-2C	24	KT4250-3C	36	KT4250-4C	48
T5	300	250 kcmil - 500 kcmil	KT5300-2C	34	KT5300-3C	51	KT5300-4C	68
	400	(2) 3/0 - 250 kcmil	KT5400-2C	34	KT5400-3C	51	KT5400-4C	68

① Use Discount schedule SH



KT4PFVR

KT4PMK (on back of breaker)



KT5WFVR

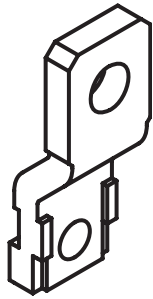


KT4WMK (on back of breaker)

Accessories

Mechanical

T4 - T5



KT4EF-

Extended front terminals

Breaker	Amps	Set of three		Set of four	
		Catalog number suffix	List price adder	Catalog number	List Price
T4	250	KT4EF-3	\$ 55	KT4EF-4	\$ 73
T5	400	KT5EF-3	115	KT5EF-4	155

Rear terminals

Breaker	Amps	Set of three		Set of four	
		Catalog number suffix	List price adder	Catalog number	List Price
T4	250	KT4R-3	\$ 60	KT4R-4	\$ 80
T5	400	KT5R-3	122	KT5R-4	163

Distribution cable lug kit

Breaker	Amps	Wire range	Set of 3 catalog number	List price
T4	250	(6) #14-6	KT4TN	\$ 125
T5	400	(6) #14-1/0	KT5TGD	240

Terminal covers for fixed breakers

Low profile

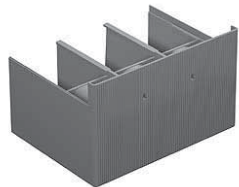
For breakers	Low profile 3-pole		Low profile 4-pole	
	Catalog number	List price	Catalog number	List price
T4	KT4LTC-3	\$ 55	KT4LTC-4	\$ 74
T5	KT5LTC-3	60	KT5LTC-4	81

High profile

For breakers	High profile 3-pole		High profile 4-pole	
	Catalog number	List price	Catalog number	List price
T4	KT4HTC-3	\$ 58	KT4HTC-4	\$ 78
T5	KT5HTC-3	63	KT5HTC-4	85



KT4LTC-3



KT4HTC-3

Mechanical interlock plate — complete assembly consists of one frame and one plate

Interlock frame			Catalog number	List price
Mechanical interlock horizontal frame			KT5MIR-HB	\$ 490
Mechanical interlock vertical frame			KT5MIR-VB	588
Plate type			Catalog number	List price
A	T4 (F-P-W)	+	T4 (F-P-W)	\$ 210
B	T4 (F-P-W)	+	T5 400 (F-P-W) or T5 630 (F)	
C	T4 (F-P-W)	+	T5 630 (P-W)	
D	T5 400 (F-P-W) or T5 630 (F)	+	T5 400 (F-P-W) or 630 (F)	
E	T5 400 (F-P-W) or T5 630 (F)	+	T5 630 (P-W)	
F	T5 630 (P-W)	+	T5 630 (P-W)	