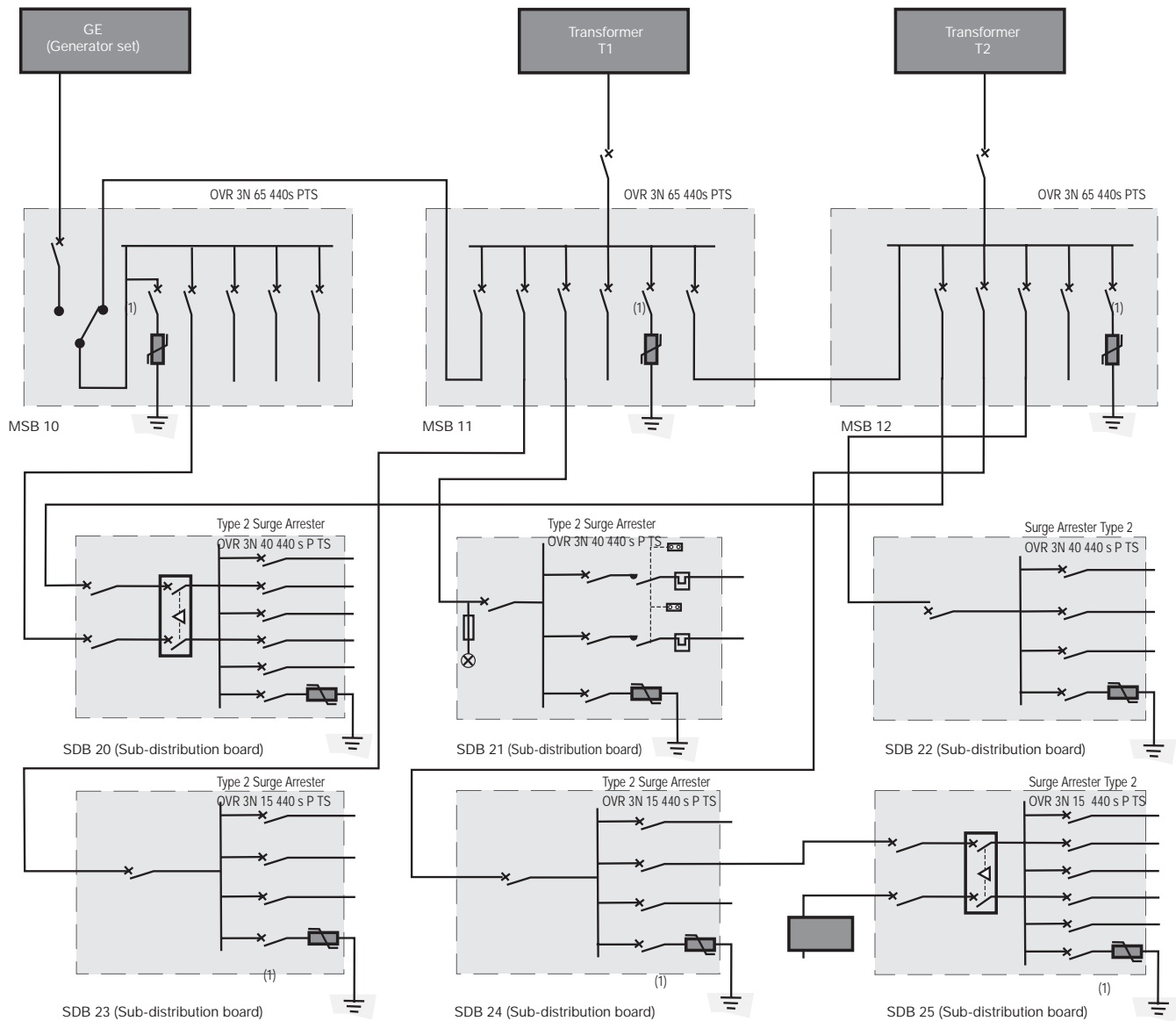


Selection

Example of a protected industrial installation



The above diagram is an example of an industrial application located in an area where the lightning strike density (N_g) is 1.2 lightning strikes per km^2 and per year:

- the building is protected by a lightning conductor.
- the lightning conductor's earthing strip is connected to the installation's earth network.
- the earthing system is IT (with distributed neutral) and then TNS for the sub-distribution boards.
- main switch boards (MSB) 10, 11 and 12 are fitted with Type 2 surge arresters OVR 3N 65 440 s PTS.
- sub-distribution boards (SDB) 20, 21 and 22 are fitted with Type 2 surge arresters OVR 3N 40 440 s P TS.
- sub-distribution boards (SDB) 23, 24 and 25 are fitted with Type 2 surge arresters OVR 3N 15 440 s P TS.