

## E225 - E229, E10 Pilot devices



E225-11F



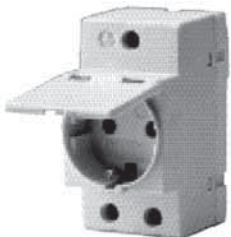
E227-10E



E233-120/60



E1175



E1175-C

Type	Catalog number	List price	Delivery schedule	Pack units pcs.	Weight (Oz.) 1 piece
<b>Pushbutton, 1 N.O. + 1 N.C. contact</b>					
Grey	E225-11B	<b>\$ 75</b>	A	10	1.94
Red	E225-11C				
Green	E225-11D				
Yellow	E225-11E				
Black	E225-11F				
Blue	E225-11G				

### Illuminated pushbutton, 1 N.O. contact with lamp, 120 VAC

Clear	E227-10B/110	<b>100</b>	A	10	1.94
Red	E227-10C/110				
Green	E227-10D/110				
Yellow	E227-10E/110				
Blue	E227-10G/110				

### Pilot light with lamp, 120 VAC

Clear	E229-B/110	<b>93</b>	A	10	1.59
Red	E229-C/110				
Green	E229-D/110				
Yellow	E229-E/110				
Blue	E229-G/110				

### Lamps

24 VAC/DC	E10/24	<b>24</b>	A	1	0.14
120 VAC/DC	E10/110				
220 VAC/DC	E10/220				

Note: Above devices are UL 508 recognized and IEC certified. UL file # E171252

### Special features

- Safe connection via box terminals
- Captive screws with Phillips/Slotted head, Posidriv system, Gr. 1
- Snap-on labels available
- Protection against unintentional touch acc. to DIN VDE 0106 Part 100
- Lenses and pushbuttons in six colors

### Elapsed time meter

Type	Catalog number	List price	Delivery schedule	Pack units pcs.	Weight (KG) 1 piece
24 VAC, 60 Hz	E233-24/60	<b>\$ 130</b>	B	1	0.045
120 VAC, 60 Hz	E233-120/60		A		
240 VAC, 60 Hz	E233-240/60		B		

- Non-resettable
  - 100,000 hours (99999.99)
- UL file #171252

### Sockets

Type	Catalog number	List price	Delivery schedule	Pack units pcs.	Weight (KG) 1 piece
Socket, 250 VAC, 50/60 Hz Italian standard	E1173	<b>\$ 57</b>	B	1	0.2
Socket, 250 VAC, 50/60 Hz French standard	E1174	<b>\$ 57</b>	B	1	0.2
Socket, 250 VAC, 50/60 Hz Schuko standard	E1175	<b>\$ 57</b>	B	1	0.2
Socket w/cover, 250 VAC, 50/60 Hz Schuko standard	E1175-C	<b>\$ 57</b>	B	1	0.2

### Delivery Class

- A - Standard item, stock to 2 weeks lead time
- B - Stock to 4 weeks lead time
- C - 6 to 8 week lead time